

Preferred Alternative

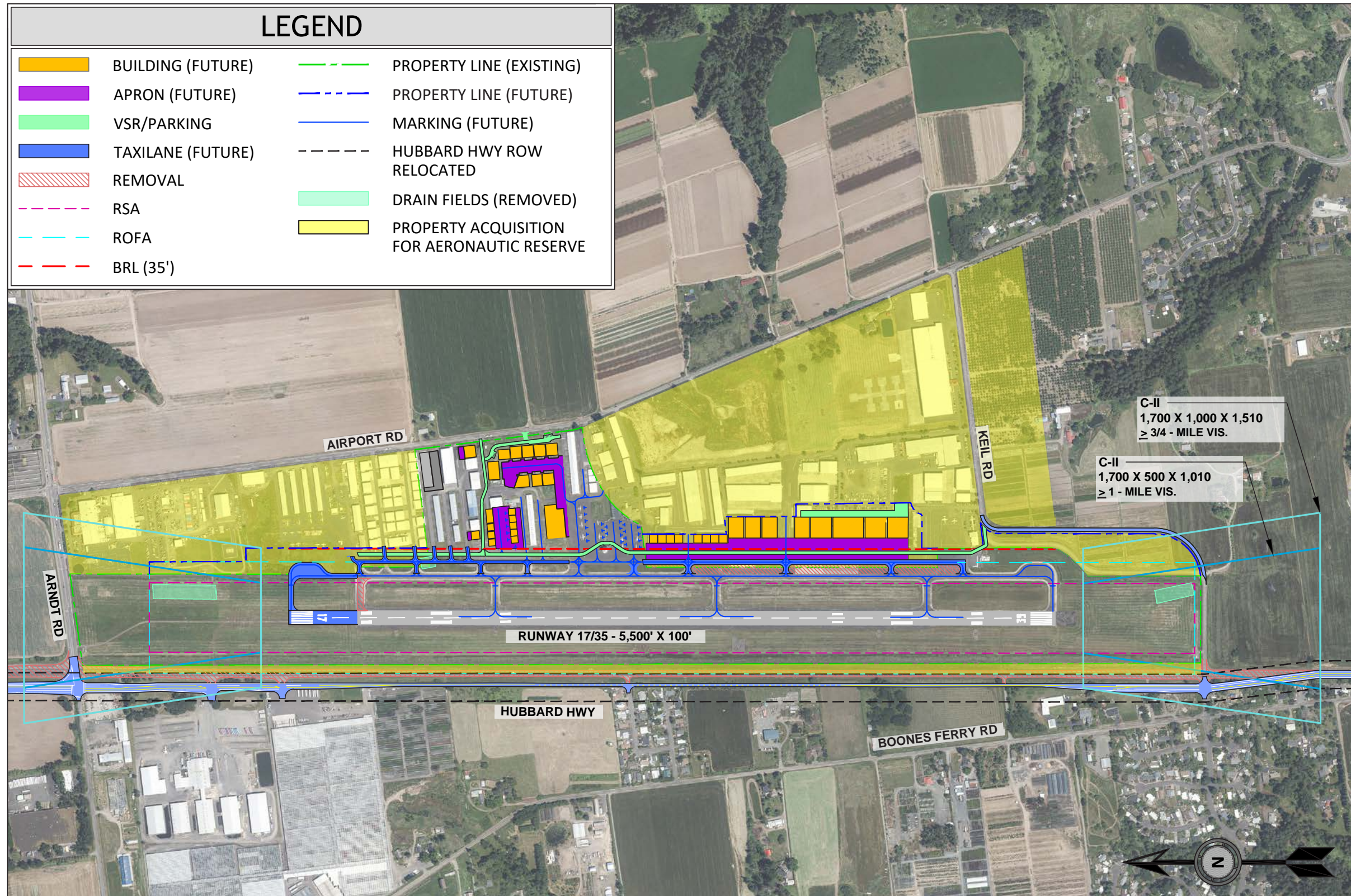
Project Update 10/15/2024

Refined Preliminary Alternative 1A was selected as the preferred alternative following an extensive review of all feedback provided by the FAA, members of the PAC, airport users, and the public throughout the planning process. The preferred alternative identifies a path to conformance to correct the existing non-standard ROFA and RSA as required by the FAA, and it offers advantages over the other preliminary alternatives including:

- It maintains the runway in its current location compared to Refined Preliminary Alternatives 1B and 2.
- It reduces the impacts on west residential properties compared to Refined Preliminary Alternative 1B.
- It does not require relocation of the ATCT as required in Preliminary Alternative 2.
- It provides phased opportunities for the flexible implementation of projects to conform to standards, improve efficiency, and improves safety. The phases of these projects are in no specific order of implementation; however, based on FAA input, the phase to extend the runway would not occur until the phase to meet ROFA and RSA standards are completed. The phases of the preferred alternative include:
 - » Figure 1: Preferred Alternative Overview
 - » Figure 2: Phase for projects needed to meet ROFA & RSA conformance standards
 - » Figure 3: Phase for addition of a vehicle service road (VSR)
 - » Figure 4: Phase for runway and parallel taxiway extension
 - » Figure 5: Phase for the addition of a parallel taxiway
 - » Figure 6: Property Overview

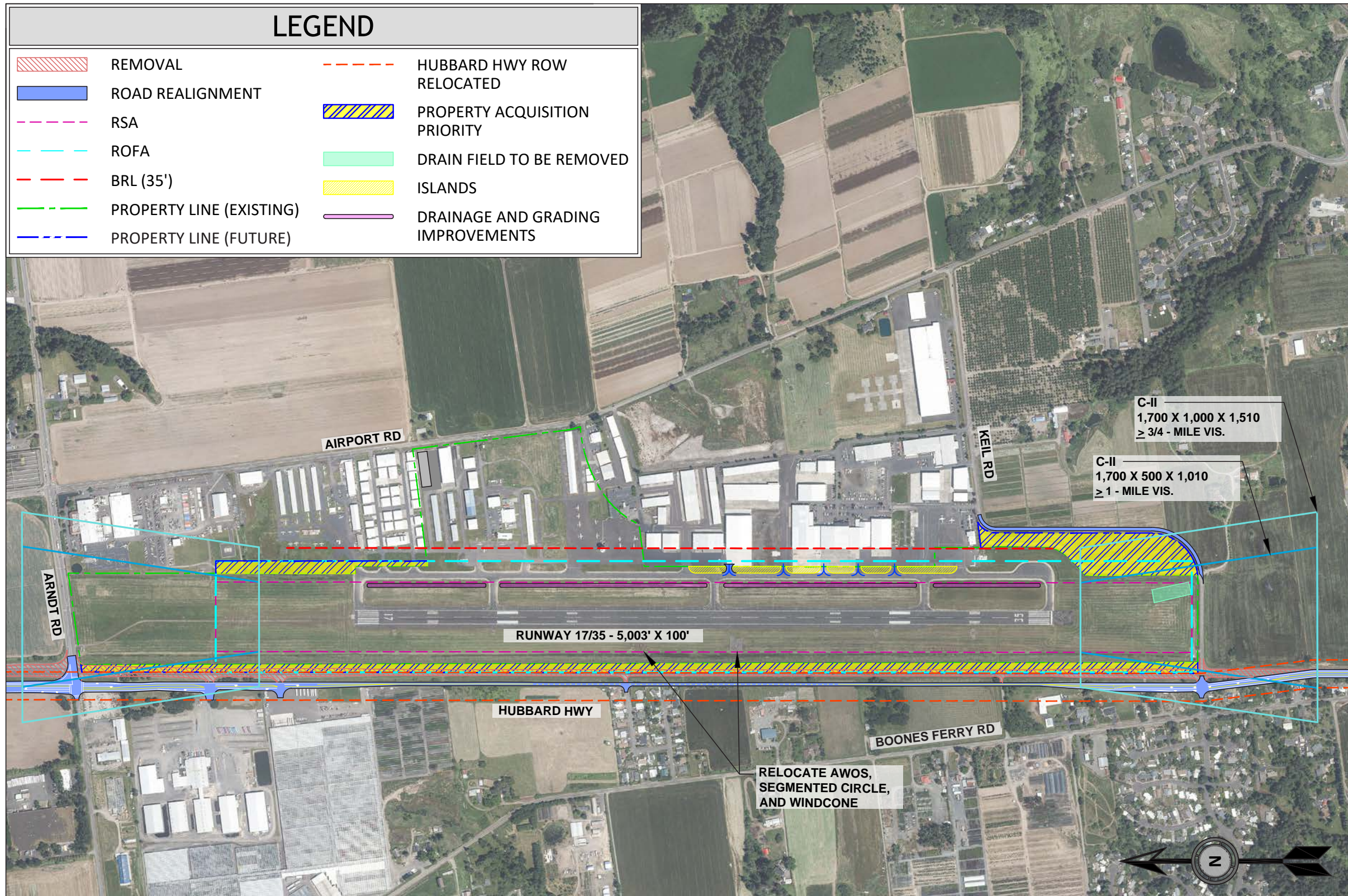
PREFERRED ALTERNATIVE

Figure 1: Overview



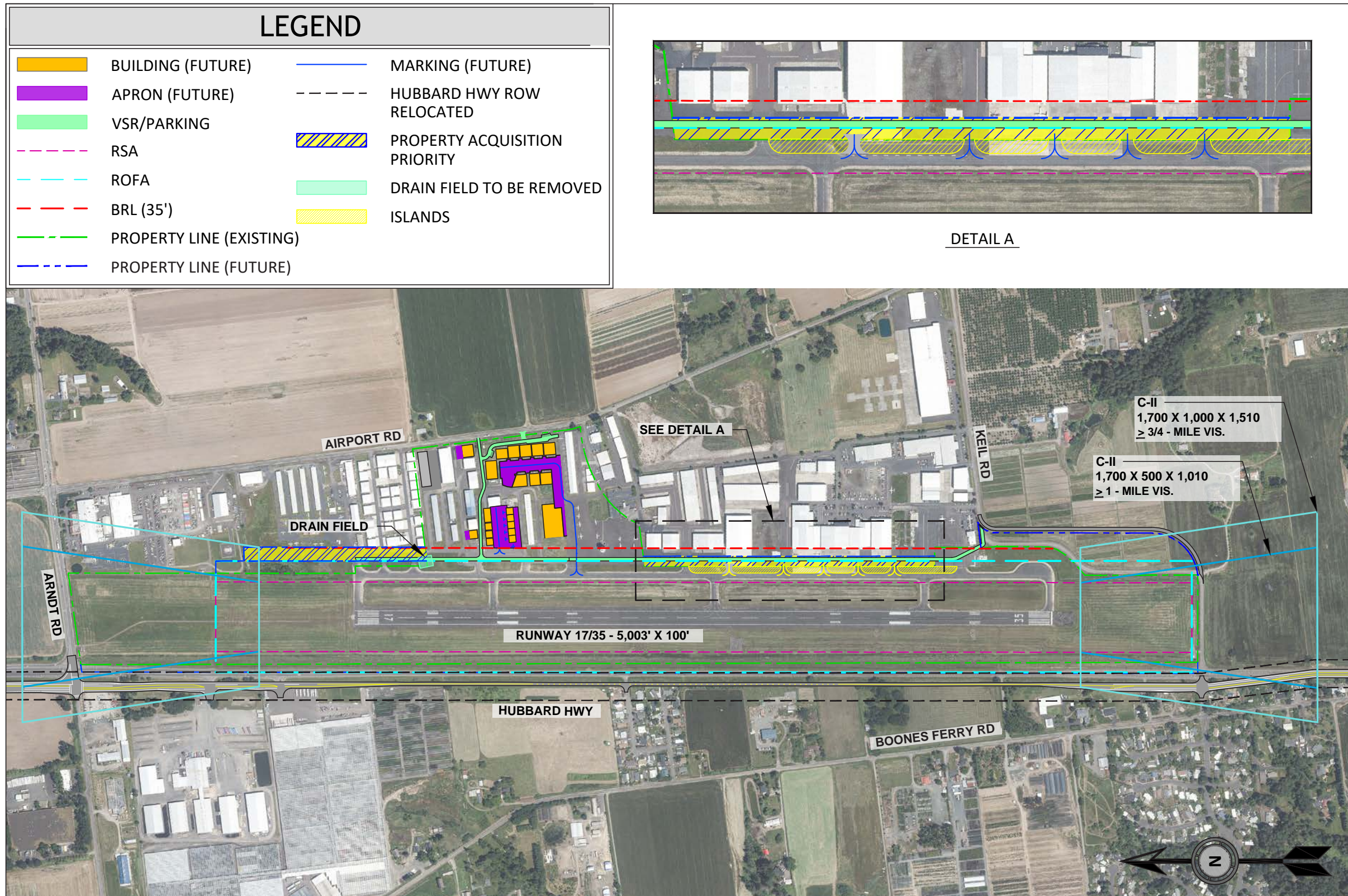
PREFERRED ALTERNATIVE

Figure 2: Meet ROFA & RSA Conformance Standards



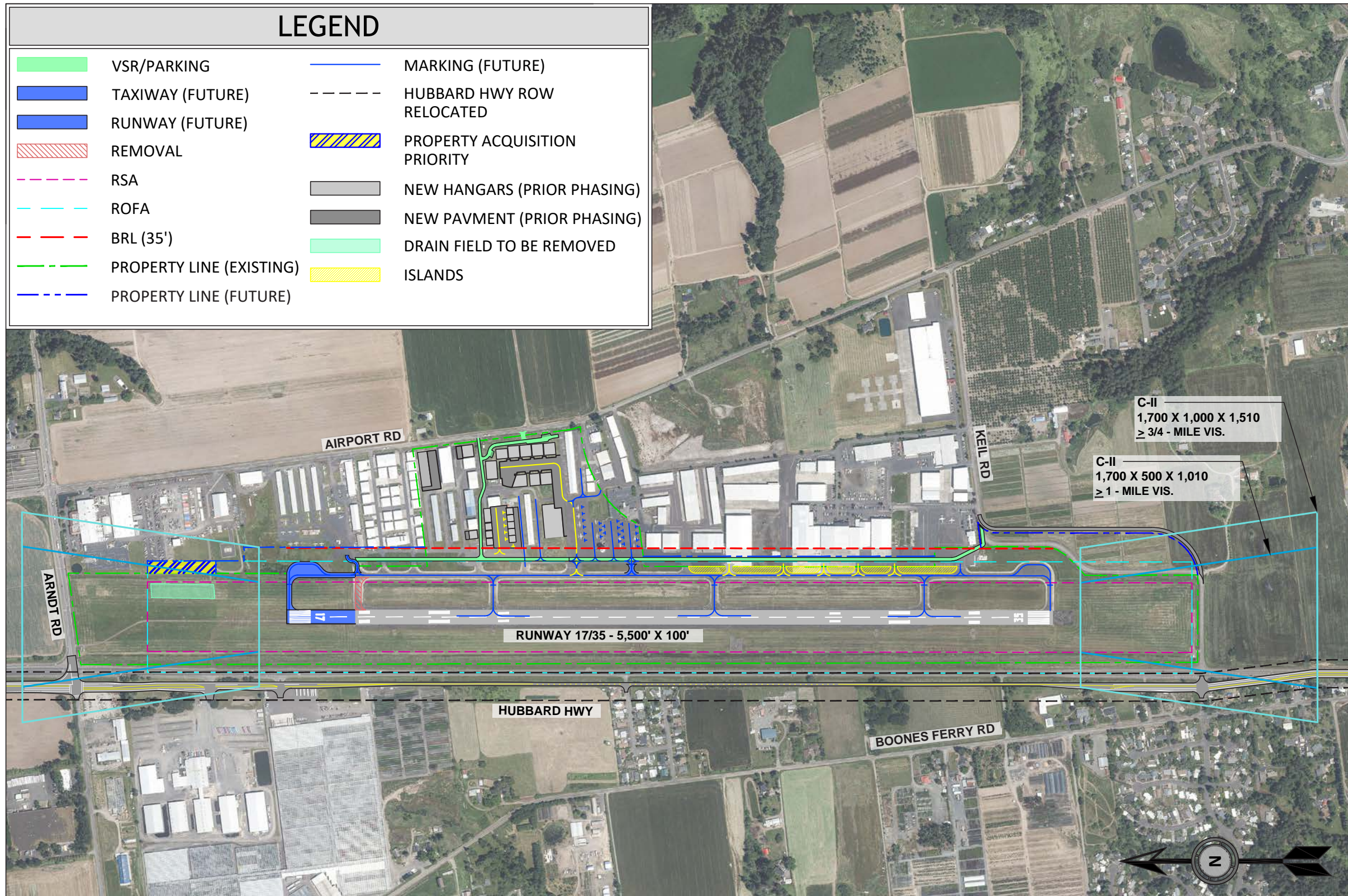
PREFERRED ALTERNATIVE

Figure 3: Addition of a Vehicle Service Road (VSR)



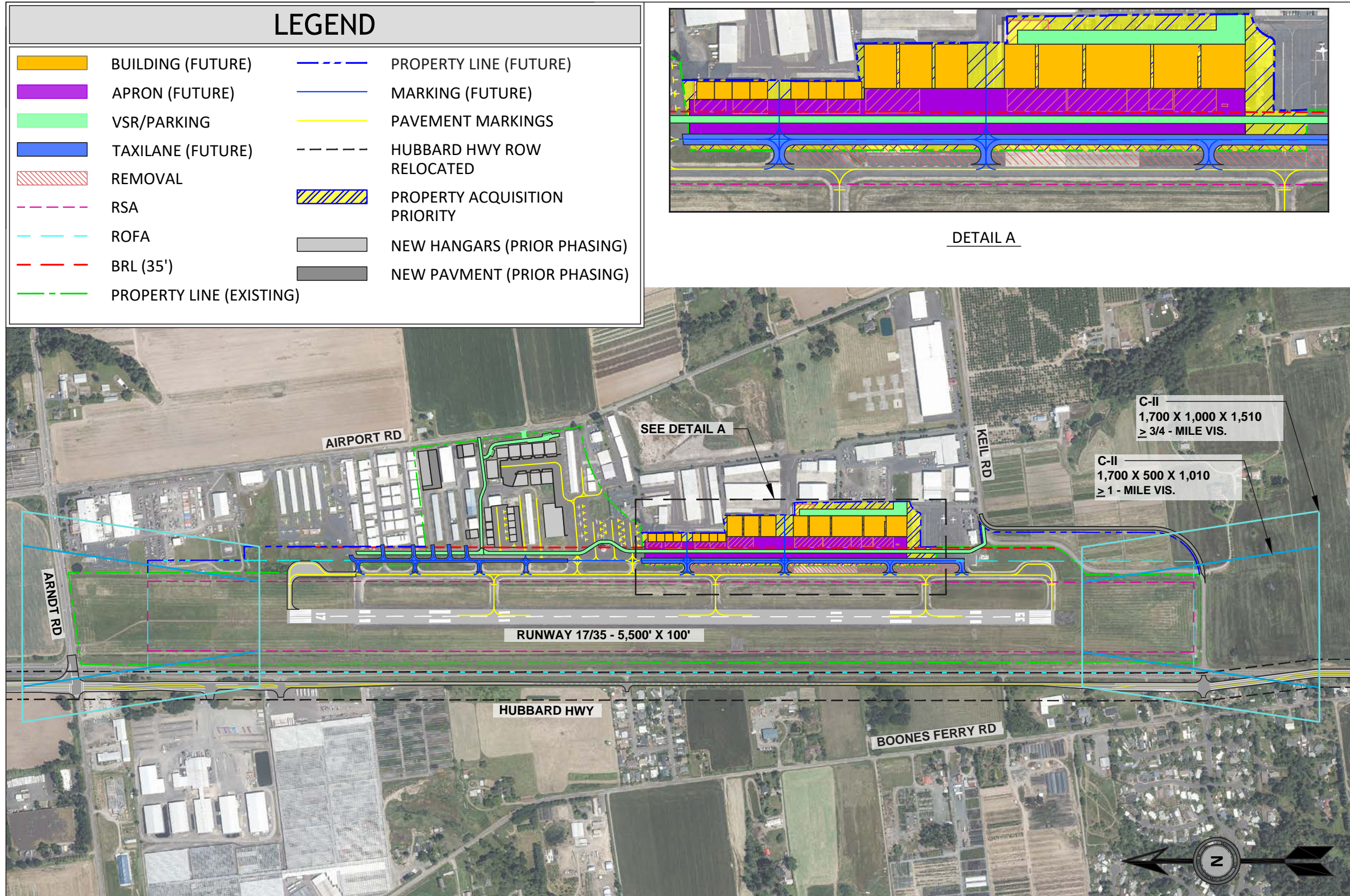
PREFERRED ALTERNATIVE

Figure 4: Runway and Parallel Taxiway Extension



PREFERRED ALTERNATIVE

Figure 5: Addition of a Parallel Taxilane



PREFERRED ALTERNATIVE

Figure 6: Property Overview

