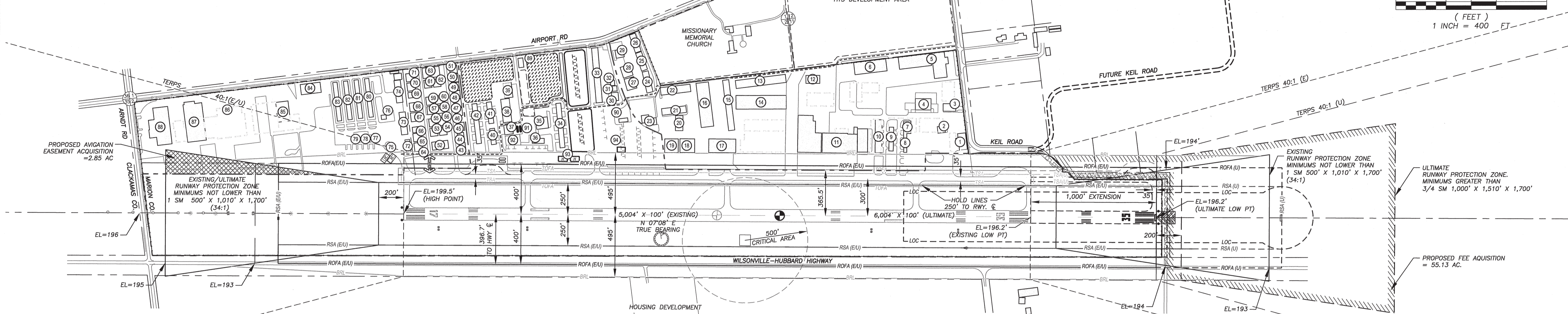
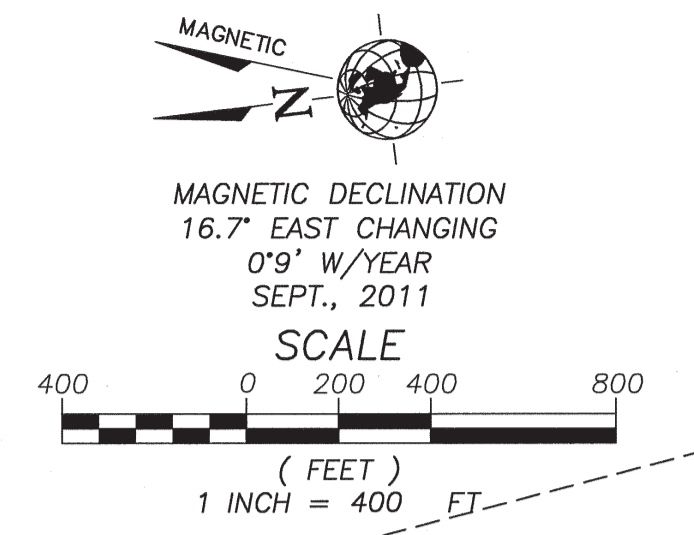


NOTE
THE PREPARATION OF THIS DOCUMENT MAY HAVE BEEN SUPPORTED, IN PART, THROUGH THE AIRPORT IMPROVEMENT PROGRAM FINANCIAL ASSISTANCE FROM THE FEDERAL AVIATION ADMINISTRATION (PROJECT NUMBER 3-41-0004-015) AS PROVIDED UNDER TITLE 49, UNITED STATES CODE, SECTION 47104. THE CONTENTS DO NOT NECESSARILY REFLECT THE OFFICIAL VIEWS OR POLICY OF THE FAA. ACCEPTANCE OF THIS REPORT BY THE FAA DOES NOT IN ANY WAY CONSTITUTE A COMMITMENT ON THE PART OF THE UNITED STATES TO PARTICIPATE IN ANY DEVELOPMENT DEPICTED THEREIN NOR DOES IT INDICATE THAT THE PROPOSED DEVELOPMENT IS ENVIRONMENTALLY ACCEPTABLE IN ACCORDANCE WITH APPROPRIATE PUBLIC LAWS.

Dedared Distances (1,000-foot Extension to Runway 35)				
	Runway 35		Runway 17	
	Existing	Ultimate	Existing	Ultimate
Takeoff Run Available (TORA)	5,004'	6,004'	5,004'	6,004'
Takeoff Distance Available (TODA)	5,004'	6,004'	5,004'	6,004'
Accelerate-Stop Distance Available (ASDA)	5,004'	6,004'	5,004'	6,004'
Landing Distance Available (LDA)	5,004'	6,004'	5,004'	6,004'



Legend		
	EXISTING	ULTIMATE
AIRPORT PROPERTY LINE	---	---
FEE ACQUISITION	---	SAME
AVIGATION EASEMENT ACQUISITION	---	SAME
ON-AIRPORT BUILDING	---	---
OFF-AIRPORT BUILDING	---	---
FENCE	---	SAME
AIRPORT REFERENCE POINT	⊕	⊕
BUILDING RESTRICTION LINE (35' AGL) (BRL)	---	SAME
RUNWAY SAFETY AREA (RSA)	---	---
RUNWAY OBJECT FREE AREA (ROFA)	---	---
RUNWAY PROTECTION ZONE (RPZ)	---	---
EXTENDED RUNWAY CENTERLINE	---	SAME
DISPLACED THRESHOLD	N/A	---
RUNWAY HOLDLINE	---	SAME
TAXIWAY SAFETY AREA (TSA)	---	---
TAXIWAY OBJECT FREE AREA (TOFA)	---	---
SERVICE ROAD	N/A	---
HANGAR DEVELOPMENT AREA	---	SAME
APRON / TIEDOWN AREA	---	---
WINDCOE & SEGMENTED CIRCLE	---	SAME
VASI	---	SAME
PAPI	N/A	SAME
REIL	---	SAME
ODAL	---	SAME
LOCALIZER	---	SAME
LOCALIZER CRITICAL AREA	---	SAME
CARGO APRON	N/A	---
PAVEMENT	---	---
PAVEMENT REMOVAL	---	SAME
FUEL TANKS	---	---
HELICOPTER PARKING	---	---
RESIDENTIAL THROUGH THE FENCE ACCESS (RTTF)	---	SAME

Runway 17/35 Data			
	Existing	Ultimate	
Percent Effective Gradient	0.06%	Same	
Percent Wind Coverage (10.5 kts)	98.93%	Same	
Maximum Elevation Above MSL	199.5'	Same	
Runway Length	5,004'	6,004'	
Runway Width	100'	Same	
Runway Surface Type	Asphalt	Same	
Runway Strength (Dual Wheel Gear)	45,000 lbs	60,000 lbs	
FAR Part 77 Approach Category			
Runway 17	C (NP)	Same	
Runway 35	C (NP)	D (NP)	
Approach Type	Nonprecision	Same	
Runway 17	Not lower than 1 sm	Same	
Runway 35	Not lower than 1 sm	Not lower than 3/4 sm	
Approach Slope (Required / Clear)	34:1 / 34:1	Same	
Runway Lighting	MIRL	Same	
Runway Marking	Precision	Same	
Taxiway Lighting	MITL / Reflectors	Same	
Taxiway Marking	Standard	Same	
Navigation Aids	LOC/DME, NDB	Same	
Visual Aids	ODALS, VASI, REIL	ODALS, PAPI, REIL	
Runway Safety Area Dimension	500' x 1,000' beyond rwy end	Same	
Runway Object Free Area Dimension	800' x 1,000' beyond rwy end	Same	
Runway Obstacle Free Zone (OFZ)	No OFZ Penetrations	Same	
Runway End Coordinates			
Runway 17	Latitude 45°15'14.166"N	Same	
Runway 35	Longitude 122°46'07.828"W	Same	
Runway 17	Latitude 45°14'25.148"N	45°14'15.350"N	
Runway 35	Longitude 122°46'16.515"W	122°46'18.251"W	

Airport Data		
	Existing	Ultimate
Airport Elevation (MSL)	199.5'	Same
Airport Reference Point (ARP)		
Latitude	45°14'54.085"N	45°14'44.758"N
Longitude	122°46'11.405"W	122°46'13.040"W
Mean Maximum Temperature	84°	Same
Airport Reference Code (ARC)	C-II	C-II
Airport Service Level	General Aviation	Same
Design Aircraft	IAI Astra 1125	Cessna Citation X

Notes
Horizontal datum is NAD 1983, vertical datum is NAVD88.
The Airport is flat. Elevations / ground contours vary by less than 5 feet and are not shown. Drainage features are typically 2-3 feet lower than adjacent land.
Building restriction line is based on a 35-foot building located 495 feet from the runway centerline not penetrating FAR Part 77 surfaces for the Airport.
A Residential Through The Fence (RTTF) access exists at hangar #64 at the Wylee Condominium Association. The tenant is the resident caretaker for the airport.

Modifications to Standards		
Standard Being Modified	Proposed Action	
1 Advisory Circular (AC) 150/5300-13, para 307 (Runway Object Free Area)	The standard runway object free area (OFA) for Airport Reference Code C-II airports is 800 feet. Highway 551 runs north/south parallel to Runway 17/35; the approximate distance from the Runway 17/35 centerline to the Highway 551 centerline is 400 feet. As the airport geometry is not changing from the current condition, the Oregon Department of Aviation (ODA) requests a modification of the OFA design standard to allow the runway and highway to remain in their current positions.	
2 AC 150/5300-13, Appendix 14 (Declared Distances)	The ODA requests the existing threshold for Runway 17 be referenced in determining FAR Part 77 surfaces and design standard surfaces referenced in AC 150/5300-13 (i.e., RSA, RPZ, OFA, OFZ).	

Airport Facilities and Buildings Legend				
Building No.	Name / Owner	Use	Estimated Top Elevation (AGL)	
1	Leased by Aurora Jet Center	Maintenance, Aircraft Storage	27'	
2	Aurora Jet Center	Fixed Base Operator	22'	
3	Private Southend Hangar	Aircraft Storage	19'	
4	BPS Associates	Aircraft Storage	23'	
5	Van's Aircraft	Business	30'	
6	Artex	Business	26'	
7, 8	Foxtrot Hangars / Southend Airpark	Aircraft Storage	21'	
9	Hangar Row G / Southend Airpark	Aircraft Storage	13'	
10	Hangar Row H / Southend Airpark	Business, Aircraft Storage	21'	
11	Hangar India, Juliet & Kilo / Southend Airpark	Business, Aircraft Storage	38'	
12	Winco	Business	29'	
13	Hangar November / Southend Airpark	Business, Aircraft Storage	29'	
14	Hangar Mike / Southend Airpark	Business, Aircraft Storage	31'	
15-17	Airport Aviation Condo Association	Aircraft Storage	32'	
18	Airport Aviation Condo Association	Aircraft Storage	32'	
19	Aurora Aviation	Maintenance	26'	
20-22	Airport Aviation Condo Association	Aircraft Storage	25'	
23	Columbia Aviation Association	Clubhouse	21'	

Airport Facilities and Buildings Legend				
Building No.	Name / Owner	Use	Estimated Top Elevation (AGL)	
24-26	Meridian Condos	Business	23'	
27-29	Pacific Coast Aviation	Business	26'	
30-33	Oregon Dept. of Aviation	Aircraft Storage	25'	
34	Columbia Helicopters	Aircraft Storage	22'	
35	Columbia Helicopters	Maintenance	28'	
36	Aurora Aviation	Fixed Base Operator	16'	
37	Pitts Hangar	Business	26'	
38-42	Aurora Business Park	Aircraft Storage	25'	
43-71	Wylee Condo Association	Aircraft Storage	27'	
72	Civil Air Patrol Building	Aircraft Storage	26'	
73	Sunset Helicopters	Business	26'	
74	Aerometal	Business	27'	
75	Willamette Aviation	Aircraft Fueling	7'	
76	Willamette Aviation	Fixed Base Operator	12'	
77-83	Willamette Aviation	Aircraft Storage	16'	
84	Marlow Treit	Aircraft Storage	22'	
85-88	Columbia Helicopters	Business	30'	
89	Fire Suppression Tanks	Fire Suppression	12'	
90	Aurora Rural Fire Protection District	Emergency Response	TBD	
91	Aurora Aviation	Aircraft Fueling	16'	
92	Oregon Dept. of Aviation	Cargo Apron	N/A	
93	Oregon Dept. of Aviation	Helicopter Parking	N/A	
94	Oregon Dept. of Aviation	Air Traffic Control Tower	90'	

DATE: 10/17/2012 9:23 AM [AUTHOR: rivosetk] [PLOTTER: CatePDF Writer.pc3] [STYLE: WHP-Standard.ctb] [PATH: P:\Oregon Department of Aviation\034317\Design\Drawings\Xrefs\034317-MSTR-ALP.dwg] [LAYOUT: Layout1]

9755 SW Barnes Rd, Suite 300
Portland, OR 97225
503-626-0455 Fax 503-526-0775
www.whpacific.com

APPROVAL BLOCK
OREGON DEPARTMENT OF AVIATION
FEDERAL AVIATION ADMINISTRATION

SIGNATURE: <i>Michael Sweet</i>	DATE: 10/17/2012
TITLE: Director	
SIGNATURE: <i>Carol Guomi</i>	DATE: 10/18/12
TITLE: Manager, State AD	
APPROVAL LETTER DATED: 10/19/12	

SHEET INFO		REVISIONS	
DESIGNED	SML	NO.	BY DATE REMARKS
DRAWN	RAI		
CHECKED	REA		
APPROVED	---		
LAST EDIT	10/17/2012		
PLOT DATE	6/28/2012		
SUBMITTAL			

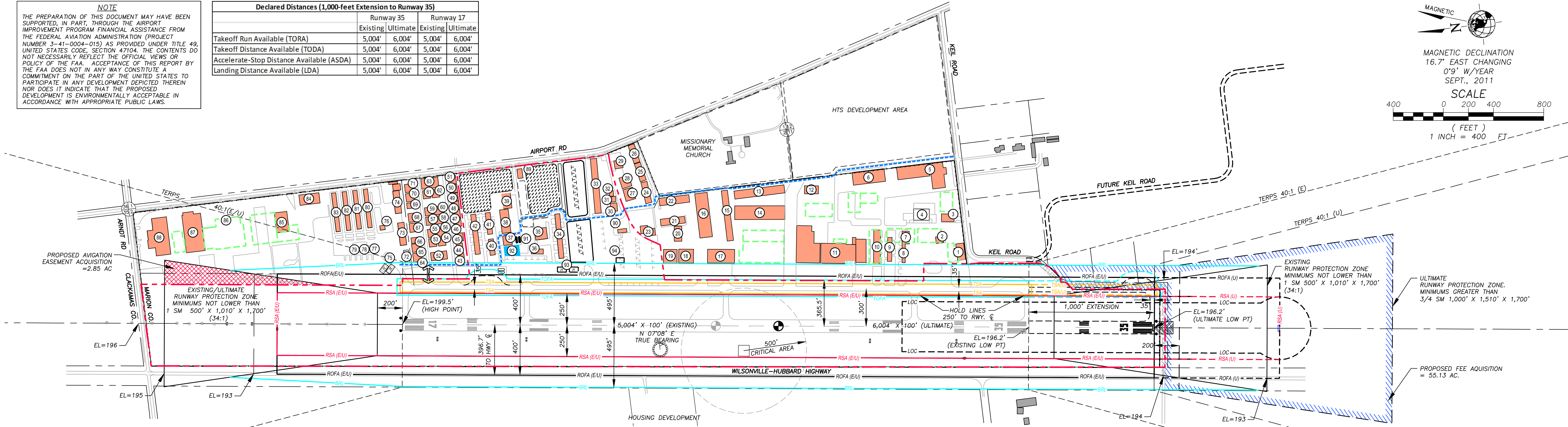
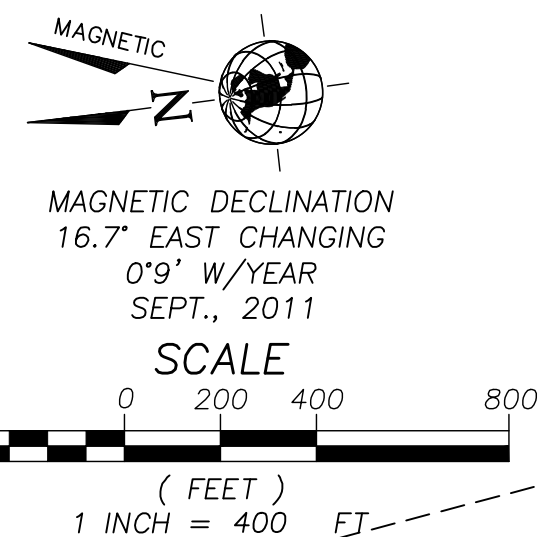
AIRPORT LAYOUT PLAN DRAWING
OREGON DEPARTMENT OF AVIATION
AURORA STATE AIRPORT ~ MASTER PLAN UPDATE

PROJECT NUMBER 034317	DRAWING FILE NAME 034317-XREF-MSTR-ALP	SCALE 1"=400'
--------------------------	-------------------------------------------	------------------

SHEET NUMBER 1	2 of 10
--------------------------	---------

NOTE
THE PREPARATION OF THIS DOCUMENT MAY HAVE BEEN SUPPORTED, IN PART, THROUGH THE AIRPORT IMPROVEMENT PROGRAM FINANCIAL ASSISTANCE FROM THE FEDERAL AVIATION ADMINISTRATION (PROJECT NUMBER 3-41-0004-015) AS PROVIDED UNDER TITLE 49, UNITED STATES CODE, SECTION 47104. THE CONTENTS DO NOT NECESSARILY REFLECT THE OFFICIAL VIEWS OR POLICY OF THE FAA. ACCEPTANCE OF THIS REPORT BY THE FAA DOES NOT IN ANY WAY CONSTITUTE A COMMITMENT ON THE PART OF THE UNITED STATES TO PARTICIPATE IN ANY DEVELOPMENT DEPICTED THEREIN NOR DOES IT INDICATE THAT THE PROPOSED DEVELOPMENT IS ENVIRONMENTALLY ACCEPTABLE IN ACCORDANCE WITH APPROPRIATE PUBLIC LAWS.

Declared Distances (1,000-foot Extension to Runway 35)	Runway 35		Runway 17	
	Existing	Ultimate	Existing	Ultimate
Takeoff Run Available (TORA)	5,004'	6,004'	5,004'	6,004'
Takeoff Distance Available (TODA)	5,004'	6,004'	5,004'	6,004'
Accelerate-Stop Distance Available (ASDA)	5,004'	6,004'	5,004'	6,004'
Landing Distance Available (LDA)	5,004'	6,004'	5,004'	6,004'



	EXISTING	ULTIMATE
AIRPORT PROPERTY LINE	---	---
FEE ACQUISITION	---	---
AVIGATION EASEMENT ACQUISITION	---	---
ON-AIRPORT BUILDING	---	---
OFF-AIRPORT BUILDING	---	---
FENCE	---	---
AIRPORT REFERENCE POINT	---	---
BUILDING RESTRICTION LINE (35' AGL) (BRL)	---	---
RUNWAY SAFETY AREA (RSA)	---	---
RUNWAY OBJECT FREE AREA (ROFA)	---	---
RUNWAY PROTECTION ZONE (RPZ)	---	---
EXTENDED RUNWAY CENTERLINE	---	---
DISPLACED THRESHOLD	---	---
RUNWAY HOLDLINE	---	---
TAXIWAY SAFETY AREA (TSA)	---	---
TAXIWAY OBJECT FREE AREA (TOFA)	---	---
SERVICE ROAD	---	---
HANGAR DEVELOPMENT AREA	---	---
APRON / TIEDOWN AREA	---	---
WINDCONE & SEGMENTED CIRCLE	---	---
VASI	---	---
PAPI	---	---
REIL	---	---
ODAL	---	---
LOCALIZER	---	---
LOCALIZER CRITICAL AREA	---	---
CARGO APRON	---	---
PAVEMENT	---	---
PAVEMENT REMOVAL	---	---
FUEL TANKS	---	---
HELICOPTER PARKING	---	---
RESIDENTIAL THROUGH THE FENCE ACCESS (RTFF)	---	---

Airport Facilities and Buildings Legend			
Building No.	Name / Owner	Use	Estimated Top Elevation (AGL)
1	Leased by Aurora Jet Center	Maintenance, Aircraft Storage	27'
2	Aurora Jet Center	Fixed Base Operator	22'
3	Private Southend Hangar	Aircraft Storage	19'
4	BPS Associates	Aircraft Storage	23'
5	Van's Aircraft	Business	30'
6	Artex	Business	26'
7, 8	Foxtrot Hangars / Southend Airpark	Aircraft Storage	21'
9	Hangar Row G / Southend Airpark	Aircraft Storage	13'
10	Hangar Row H / Southend Airpark	Business, Aircraft Storage	21'
11	Hangar India, Juliet & Kilo / Southend Airpark	Business, Aircraft Storage	38'
12	Winco	Business	29'
13	Hangar November / Southend Airpark	Business, Aircraft Storage	29'
14	Hangar Mike / Southend Airpark	Business, Aircraft Storage	31'
15-17	Airport Aviation Condo Association	Aircraft Storage	32'
18	Airport Aviation Condo Association	Aircraft Storage	32'
19	Aurora Aviation	Maintenance	26'
20-22	Airport Aviation Condo Association	Aircraft Storage	25'
23	Columbia Aviation Association	Clubhouse	21'

Airport Facilities and Buildings Legend			
Building No.	Name / Owner	Use	Estimated Top Elevation (AGL)
24-26	Meridian Condos	Business	23'
27-29	Pacific Coast Aviation	Business	26'
30-33	Oregon Dept. of Aviation	Aircraft Storage	25'
34	Columbia Helicopters	Aircraft Storage	22'
35	Columbia Helicopters	Maintenance	28'
36	Aurora Aviation	Fixed Base Operator	16'
37	Pitts Hangar	Aircraft Storage	26'
38-42	Aurora Business Park	Aircraft Storage	25'
43-71	Wylee Condo Association	Aircraft Storage	27'
72	Civil Air Patrol Building	Aircraft Storage	26'
73	Sunset Helicopters	Business	26'
74	Aerometal	Business	27'
75	Willamette Aviation	Aircraft Fueling	7'
76	Willamette Aviation	Fixed Base Operator	12'
77-83	Willamette Aviation	Aircraft Storage	16'
84	Marlow Treit	Aircraft Storage	22'
85-88	Columbia Helicopters	Business	30'
89	Fire Suppression Tanks	Fire Suppression	12'
90	Aurora Rural Fire Protection District	Emergency Response	TBD
91	Aurora Aviation	Aircraft Fueling	16'
92	Oregon Dept. of Aviation	Cargo Apron	N/A
93	Oregon Dept. of Aviation	Helicopter Parking	N/A
94	Oregon Dept. of Aviation	Air Traffic Control Tower	90'

Runway 17/35 Data		
	Existing	Ultimate
Percent Effective Gradient	0.06%	Same
Percent Wind Coverage (10.5 kts)	98.93%	Same
Maximum Elevation Above MSL	199.5'	Same
Runway Length	5,004'	6,004'
Runway Width	100'	Same
Runway Surface Type	Asphalt	Same
Runway Strength (Dual Wheel Gear)	45,000 lbs	60,000 lbs
FAR Part 77 Approach Category		
Runway 17	C (NP)	Same
Runway 35	C (NP)	D (NP)
Approach Type		
Runway 17	Nonprecision	Same
Runway 35	Not lower than 1 sm	Same
Runway 35	Not lower than 1 sm	Not lower than 3/4 sm
Approach Slope (Required / Clear)		
Runway 17	34:1 / 34:1	Same
Runway 35	34:1 / 34:1	Same
Runway Lighting		
Runway 17	MIRL	Same
Runway 35	Precision	Same
Taxiway Lighting		
Runway 17	MIL / Reflectors	Same
Runway 35	Standard	Same
Navigation Aids		
Runway 17	LOC/DME, NDB	Same
Runway 35	ODALS, VASI, REIL	ODALS, PAPI, REIL
Visual Aids		
Runway Safety Area Dimension	500' x 1,000' beyond rwy end	Same
Runway Object Free Area Dimension	800' x 1,000' beyond rwy end	Same
Runway Obstacle Free Zone (OFZ)	No OFZ Penetrations	Same
Runway End Coordinates		
Runway 17	Latitude 45°15'14.166"N	Same
Runway 17	Longitude 122°46'07.828"W	Same
Runway 35	Latitude 45°14'25.148"N	45°14'15.350"N
Runway 35	Longitude 122°46'16.515"W	122°46'18.251"W

Airport Data		
	Existing	Ultimate
Airport Elevation (MSL)	199.5'	Same
Airport Reference Point (ARP)	Latitude 45°14'54.085"N	45°14'44.758"N
Airport Reference Point (ARP)	Longitude 122°46'11.405"W	122°46'13.040"W
Mean Maximum Temperature	84°	Same
Airport Reference Code (ARC)	C-II	C-II
Airport Service Level	General Aviation	Same
Design Aircraft	IAI Astra 1125	Cessna Citation X

Notes
Horizontal datum is NAD 1983, vertical datum is NAVD88.
The Airport is flat. Elevations / ground contours vary by less than 5 feet and are not shown. Drainage features are typically 2-3 feet lower than adjacent land.
Building restriction line is based on a 35-foot building located 495 feet from the runway centerline not penetrating FAR Part 77 surfaces for the Airport.
A Residential Through The Fence (RTFF) access exists at hangar #64 at the Wylee Condominium Association. The tenant is the resident caretaker for the airport.

Modifications to Standards	
Standard Being Modified	Proposed Action
1 Advisory Circular (AC) 150/5300-13, para 307 (Runway Object Free Area)	The standard runway object free area (OFA) for Airport Reference Code C-II airports is 800 feet. Highway 551 runs north/south parallel to Runway 17/35; the approximate distance from the Runway 17/35 centerline to the Highway 551 centerline is 400 feet. As the airport geometry is not changing from the current condition, the Oregon Department of Aviation (ODA) requests a modification of the OFA design standard to allow the runway and highway to remain in their current positions.
2 AC 150/5300-13, Appendix 14 (Declared Distances)	The ODA requests the existing threshold for Runway 17 be referenced in determining FAR Part 77 surfaces and design standard surfaces referenced in AC 150/5300-13 (i.e., RSA, RPZ, OFA, OFZ).

DATE: 1/3/2013 10:43 AM [PLOTTER: DWG To PDF.pc3] [STYLE: WHP-Standard.ctb] [AUTHOR: rivasok] [PLOTTER: DWG To PDF.pc3] [STYLE: WHP-Standard.ctb] [LAYOUT: Layout1] [PATH: P:\Oregon Department of Aviation\034317\Design\Drawings\XREF-MSTR-ALP.dwg]

APPROVAL BLOCK
OREGON DEPARTMENT OF AVIATION
SIGNATURE: _____ DATE: _____
TITLE: _____
FEDERAL AVIATION ADMINISTRATION
SIGNATURE: _____ DATE: _____
TITLE: _____
APPROVAL LETTER DATED: _____

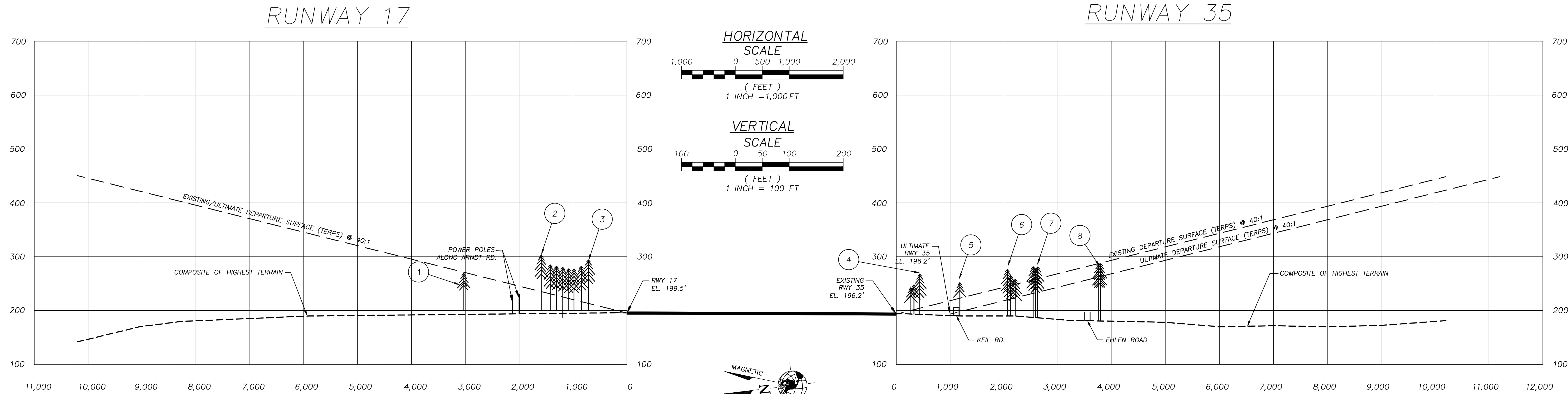
SHEET INFO	
DESIGNED	SML
DRAWN	RAI
CHECKED	REA
APPROVED	---
LAST EDIT	10/17/12
PLOT DATE	6/28/2012
SUBMITTAL	

REVISIONS			
NO.	BY	DATE	REMARKS

AIRPORT LAYOUT PLAN DRAWING
OREGON DEPARTMENT OF AVIATION
AURORA STATE AIRPORT ~ MASTER PLAN UPDATE
PROJECT NUMBER: 034317
DRAWING FILE NAME: 034317-XREF-MSTR-ALP
SCALE: 1"=400'

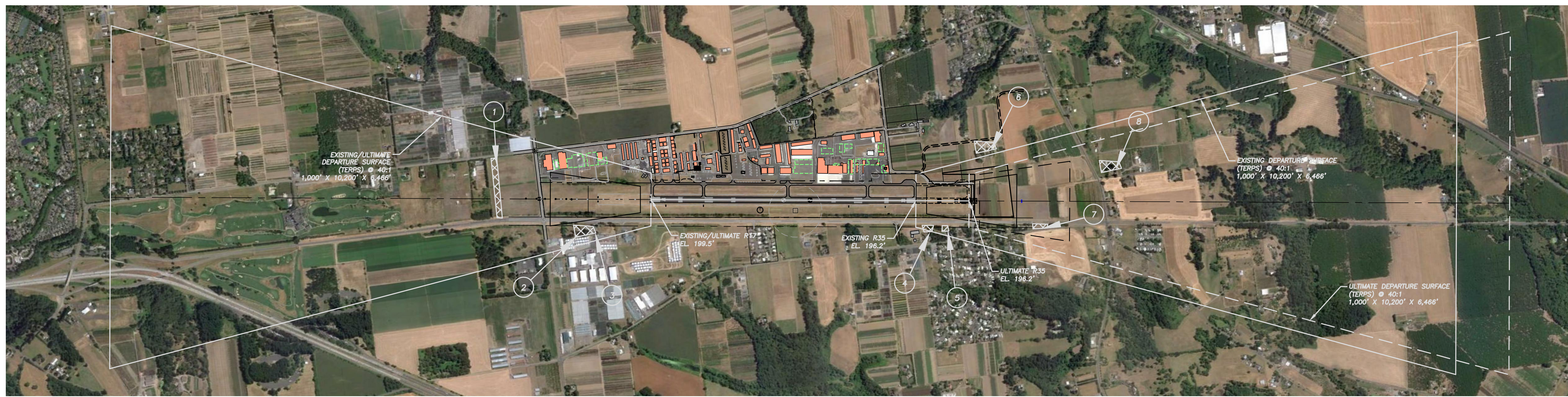
SHEET NUMBER
1
2 of 10

XREF INDEX:



MAGNETIC
DECLINATION
16.7° EAST CHANGING
0.9° W/YEAR
SEPT., 2011

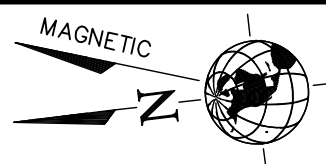
NO.	ITEM	PART 77 SURFACE	FUTURE PART 77 SURFACE	ELEV	OFFSET FROM RWY CL	DISTANCE FROM RWY END	ESTIMATED AMOUNT OF PENETRATION	AIRPORT PROPERTY	DISPOSITION
1	TREE GROUP	APPROACH (RWY 17)	SAME	269'	0' R	3028'	(-2)	NO	CLEAR TREES
2	W. END TREE LINE	NONE	APPROACH (RWY 17)	303'	491' R	1590'	67'	NO	CLEAR TREES
3	E. END TREE LINE	NONE	APPROACH (RWY 17)	294'	491' R	294'	80'	NO	CLEAR TREES
4	TREE GROUP	TRANSITIONAL (RWY 35)	APPROACH (RWY 35)	248'	453' L	270'	51'	NO	CLEAR TREES
5	TREE GROUP	TRANSITIONAL (RWY 35)	APPROACH (RWY 35)	268'	460' L	435'	68'	NO	CLEAR TREES
6	TREE GROUP	TRANSITIONAL (RWY 35)	TRANSITIONAL (RWY 35)	276'	940' R	2060'	30'	NO	CLEAR TREES
7	TREE GROUP	TRANSITIONAL (RWY 17)	APPROACH (RWY 35)	282'	423' L	2540'	20'	NO	CLEAR TREES
8	TREE GROUP	APPROACH (RWY 35)	APPROACH (RWY 35)	286'	557' R	3760'	(-2)	NO	CLEAR TREES



NOTE: NO OBSTRUCTIONS EXIST WITHIN THE AIRPORT'S TERPS SURFACES.

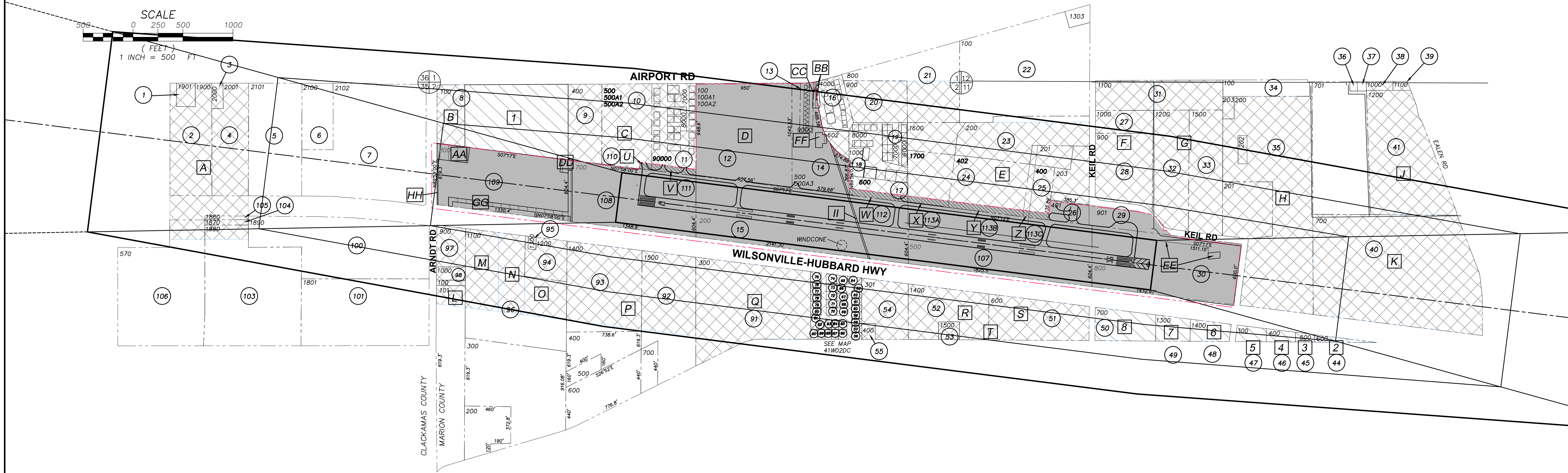
DATE: 1/3/2013 10:28 AM [AUTHOR: rivasaki] [PLOTTER: DWG To PDF.pc3] [STYLE: WHP-Standard.ctb] [LAYOUT: Layout1]
 PATH: P:\Oregon Department of Aviation\034317\Design\Drawings\Civil\034317-AIRP-DS01.dwg

 9765 SW Barnes Rd, Suite 300 Portland, OR 97225 503-626-0455 Fax 503-526-0775 www.whpacific.com		THE PREPARATION OF THIS DOCUMENT MAY HAVE BEEN SUPPORTED, IN PART, THROUGH THE AIRPORT IMPROVEMENT PROGRAM FINANCIAL ASSISTANCE FROM THE FEDERAL AVIATION ADMINISTRATION (PROJECT NUMBER 3-41-0004-015) AS PROVIDED UNDER TITLE 49, UNITED STATES CODE, SECTION 47104. THE CONTENTS DO NOT NECESSARILY REFLECT THE OFFICIAL VIEWS OR POLICY OF THE FAA. ACCEPTANCE OF THIS REPORT BY THE FAA DOES NOT IN ANY WAY CONSTITUTE A COMMITMENT ON THE PART OF THE UNITED STATES TO PARTICIPATE IN ANY DEVELOPMENT DEPICTED THEREIN NOR DOES IT INDICATE THAT THE PROPOSED DEVELOPMENT IS ENVIRONMENTALLY ACCEPTABLE IN ACCORDANCE WITH APPROPRIATE PUBLIC LAWS.	SHEET INFO DESIGNED SML DRAWN RAI CHECKED REA APPROVED --- LAST EDIT 1/3/2013 PLOT DATE 1/3/2013 SUBMITTAL	REVISIONS NO. BY DATE REMARKS	RUNWAY DEPARTURE SURFACES DRAWING OREGON DEPARTMENT OF AVIATION AURORA STATE AIRPORT ~ MASTER PLAN UPDATE	SHEET NUMBER 7 8 of 10
			PROJECT NUMBER 034317	DRAWING FILE NAME 034317-AIRP-DS01	SCALE 1"=1,000'	



MAGNETIC DECLINATION
16.7' EAST CHANGING
0'9" W/YEAR
SEPT., 2011

SCALE
0 250 500 1000
(FEET)
1 INCH = 500 FT



PROPERTY ACQUIRED UNDER FEDERAL AID PROJECTS

AREA	DATE	RECORDING INFORMATION	INTEREST ACQUIRED	EASEMENT TYPE	PREVIOUS OWNER	LAND ACQUISITION
A	03-20-43	4715A, BOOK 312 PAGE 697	EASEMENT	AVIGATION	CHARLES & LILA WALTER	ADAP 3-41-0056-01
B	12-30-42	3221B, BOOK 279, PAGE 49	EASEMENT	AVIGATION	LEWIS & BERTHA KEIL	ADAP 3-41-0056-01
C	04-19-43	3222B, BOOK 282 PAGE 662	EASEMENT	AVIGATION	WILLIAM & MANDY JESKY	ADAP 3-41-0056-01
D	1-18-43	BOOK 279, PAGE 530	FEE	OWNERSHIP	OTTO & MATILDA KNORR	ADAP 3-41-0056-01
E	12-31-42	3216B, BOOK 279, PAGE 84	EASEMENT	AVIGATION	MILDRED STEINHOFF	ADAP 3-41-0056-01
F	01-30-43	10619A, BOOK 280, PAGE 26	EASEMENT	AVIGATION	KENNETH & BERTHA BROWN	ADAP 3-41-0056-01
G	01-19-43	10620A, BOOK 279, PAGE 365	EASEMENT	AVIGATION	IRVIN & MARLEA LEFFLER	ADAP 3-41-0056-01
H	12-30-42	3213B, BOOK 279, PAGE 43	EASEMENT	AVIGATION	IRVIN & MARLEA LEFFLER	ADAP 3-41-0056-01
J	12-31-42	10644, BOOK 279, PAGE 88	EASEMENT	AVIGATION	IRVIN & MARLEA LEFFLER	ADAP 3-41-0056-01
K	12-30-42	3212A, BOOK 279, PAGE 46	EASEMENT	AVIGATION	IRVIN & MARLEA LEFFLER	ADAP 3-41-0056-01
L	12-30-42	3221B, BOOK 279, PAGE 49	EASEMENT	AVIGATION	LEWIS & BERTHA KEIL	ADAP 3-41-0056-01
M	01-09-43	3219B, BOOK 279, PAGE 359	EASEMENT	AVIGATION	DAVID KEIL	ADAP 3-41-0056-01
N	01-09-43	3220B, BOOK 279, PAGE 362	EASEMENT	AVIGATION	HENRY & SOFIA KEIL	ADAP 3-41-0056-01

PROPERTY ACQUIRED UNDER FEDERAL AID PROJECTS

AREA	DATE	RECORDING INFORMATION	INTEREST ACQUIRED	EASEMENT TYPE	PREVIOUS OWNER	LAND ACQUISITION
O	04-02-43	3218B, BOOK 282, PAGE 121	EASEMENT	AVIGATION	WILLIAM & EDNA KEIL	ADAP 3-41-0056-01
P	04-19-43	3222B, BOOK 282, PAGE 662	EASEMENT	AVIGATION	WILLIAM & MANDY JESKY	ADAP 3-41-0056-01
Q	12-31-42	3217B, BOOK 279, PAGE 91	EASEMENT	AVIGATION	OTTO & MATILDA KNORR	ADAP 3-41-0056-01
R	03-01-43	10734, BOOK 1089, PAGE 188	EASEMENT	AVIGATION	IRVIN & MARLEA LEFFLER	ADAP 3-41-0056-01
S	12-05-42	10735, BOOK 1184, PAGE 694	EASEMENT	AVIGATION	IRVIN & MARLEA LEFFLER	ADAP 3-41-0056-01
T	12-31-42	3216B, BOOK 279, PAGE 84	EASEMENT	AVIGATION	MILDRED STEINHOFF	ADAP 3-41-0056-01
U (110)	08-14-07	REEL 2857, PAGE 98	FEE	OWNERSHIP	TRI-PROP LLC	A.I.P. 3-41-0004-12
V (111)	08-13-07	REEL 2857, PAGE 77	FEE	OWNERSHIP	LLOYD B JANZEN/ JOHN WESSMAN	A.I.P. 3-41-0004-12
W (112)	08-13-07	REEL 2857, PAGE 416	FEE	OWNERSHIP	VERA L BENNETT	A.I.P. 3-41-0004-12
X (113A)	08-27-07	REEL 2859, PAGE 302	FEE	OWNERSHIP	TLM HOLDINGS, LLC	A.I.P. 3-41-0004-12
Y (113B)	08-27-07	REEL 2859, PAGE 302	FEE	OWNERSHIP	TLM HOLDINGS, LLC	A.I.P. 3-41-0004-12
Z (113C)	08-27-07	REEL 2859, PAGE 302	FEE	OWNERSHIP	TLM HOLDINGS, LLC	A.I.P. 3-41-0004-12
26	1993		FEE	OWNERSHIP	STATE OF OREGON DOT	A.I.P. 3-41-0004-003
29	1993		FEE	OWNERSHIP	STATE OF OREGON DOT	A.I.P. 3-41-0004-003
14	1985		FEE	OWNERSHIP	STATE OF OREGON DOT	A.I.P. 3-41-0004-001

a GRANT PARCEL A b GRANT PARCEL B c GRANT PARCEL C

EASEMENTS TO BE ACQUIRED

AREA	CURRENT OWNERSHIP	APPROXIMATE AREA
1	COLUMBIA HELICOPTERS, INC. P.O. BOX 3500 PORTLAND, OR 97208	16.32 A
2	THOMA AND JO ET TA SCHOMUS 21810 BOONES FERRY RD, NE AURORA, OR 97002	0.60 A
3	DAN AND JANET ANDERSON 15260 SE MINERVA MILWAUKIE, OR 97267	0.52 A
4	GARY AND KATHRYN HAMLET 21860 BOONES FERRY RD, NE AURORA, OR 97002	1.00 A
5	GENE AND DIANA BRUNO P.O. BOX 8 AURORA, OR 97002	1.05 A
6	HERMAN AND GRACE MCCUNE TIMOTHY AND EVELYN HOWLAND 22050 BOONES FERRY RD, NE AURORA, OR 97002	1.92 A
7	NORMAN AND BETTY MENNICK 22090 BOONES FERRY RD, NE AURORA, OR 97002	2.00 A
8	LYLE AND VICKI HAWORTH 22190 BOONES FERRY RD, NE AURORA, OR 97002	5.03 A

DESCRIPTION	LEGEND
EXISTING FEE OWNERSHIP	
EXISTING AVIGATION EASEMENT	
EASEMENT TO BE ACQUIRED	
PROPERTY ACQUIRED UNDER AIP 12	
PARCEL OWNERSHIP IDENTIFICATION NUMBER	
TAX LOT NUMBER	
EXISTING STATE OF OREGON DEPARTMENT OF TRANSPORTATION, DIVISION OF AERONAUTICS PROPERTY OWNERSHIP LINE	
PARCEL BOUNDARY	
RUNWAY PROTECTION ZONE	

*INFORMATION FROM DEVCO ENGINEERING FUNDED BY A.I.P. NO. 3-41-004-03 AND APPROVED 5/11/1996

DATE: 1/3/2013 10:30 AM [AUTHOR: ---] [PLOTTER: DWG To PDF.pc3] [STYLE: WHP-Standard.ctb] [PATH: P:\Oregon Department of Aviation\034317\Design\Drawings\Civil\32690-airp-ExhibitA.dwg] [LA YOUT: Exhibit A]

9755 SW Barnes Rd, Suite 300
Portland, OR 97225
503-626-0455 Fax 503-526-0775
www.whpacific.com

THE PREPARATION OF THIS DOCUMENT MAY HAVE BEEN SUPPORTED, IN PART, THROUGH THE AIRPORT IMPROVEMENT PROGRAM FINANCIAL ASSISTANCE FROM THE FEDERAL AVIATION ADMINISTRATION (PROJECT NUMBER 3-41-0004-015) AS PROVIDED UNDER TITLE 49, UNITED STATES CODE, SECTION 47104. THE CONTENTS DO NOT NECESSARILY REFLECT THE OFFICIAL VIEWS OR POLICY OF THE FAA. ACCEPTANCE OF THIS REPORT BY THE FAA DOES NOT IN ANY WAY CONSTITUTE A COMMITMENT ON THE PART OF THE UNITED STATES TO PARTICIPATE IN ANY DEVELOPMENT DEPICTED THEREIN NOR DOES IT INDICATE THAT THE PROPOSED DEVELOPMENT IS ENVIRONMENTALLY ACCEPTABLE IN ACCORDANCE WITH APPROPRIATE PUBLIC LAWS.

SHEET INFO	
DESIGNED	SML
DRAWN	RAI
CHECKED	REA
APPROVED	---
LAST EDIT	3/23/2012
PLOT DATE	1/3/2013
SUBMITTAL	

REVISIONS			
NO.	BY	DATE	REMARKS

EXHIBIT 'A' ~ PROPERTY MAP			SHEET NUMBER
OREGON DEPARTMENT OF AVIATION AURORA STATE AIRPORT ~ MASTER PLAN UPDATE			8
PROJECT NUMBER 034317	DRAWING FILE NAME 32690-AIRP-EXHIBITA	SCALE CUSTOM	9 of 10