

Appendix 5

Instrument Approach & Departure Procedures

LOC/DME I-UAO 111.15 Chan 48 (Y)	APP CRS 172°	Rwy Idg 5003 TDZE 200 Apt Elev 200
--	------------------------	---

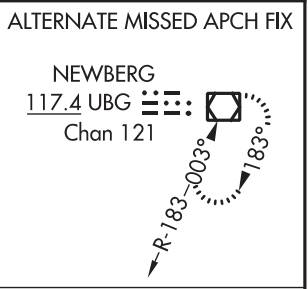
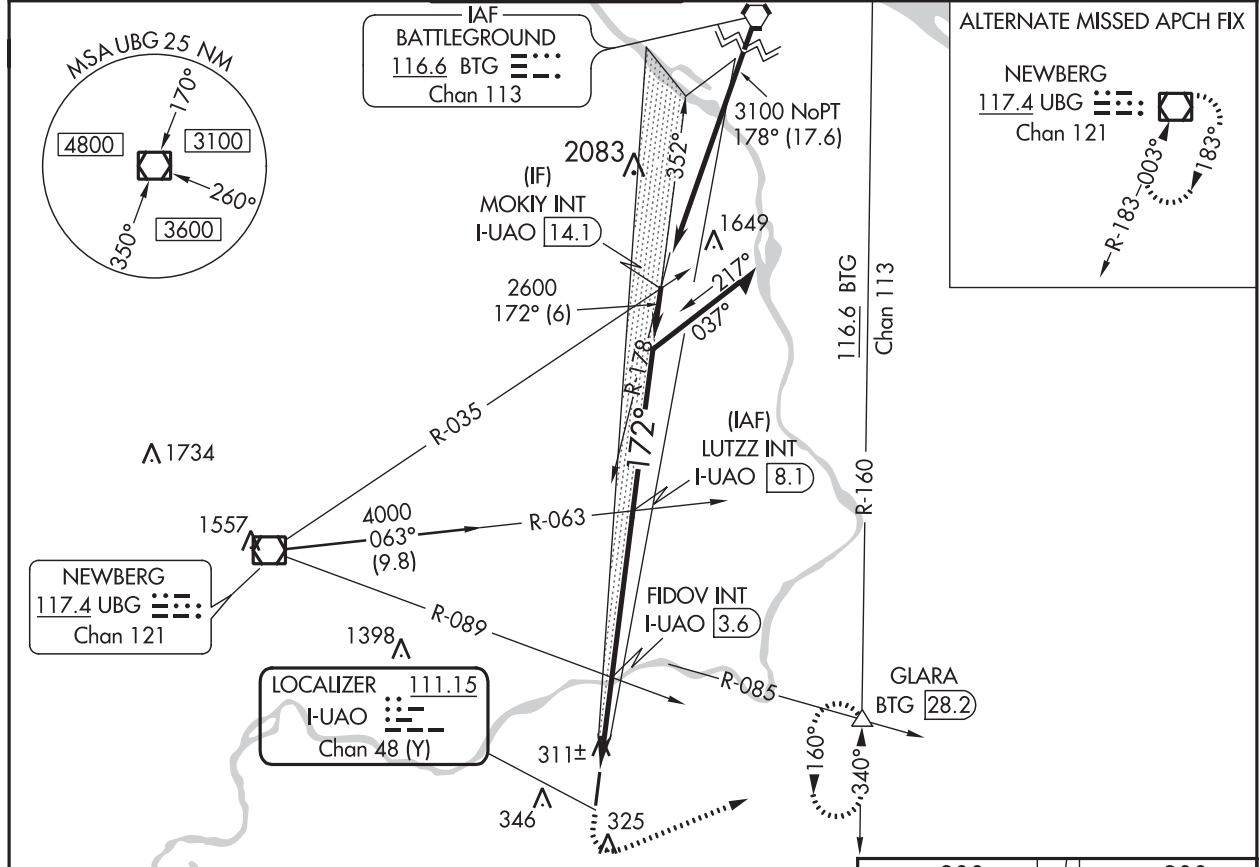
LOC RWY 17

AURORA STATE (UAO)

⚠ Rwy 17 helicopter visibility reduction below 3/4 SM NA.
⚠ FIDOV fix minimums: Inop table does not apply to Cats C/D.
 For inop ALS, increase S-17 Cats C/D visibility to 2 1/2 SM.

ODALS MISSED APPROACH: Climb to 900 then climbing left turn to 4000 on heading 050° and BTG R-160 to GLARA INT/BTG 28.2 DME and hold, continue climb-in-hold to 4000.

ATIS ★ 118.525	PORTLAND APP CON 126.0 269.175	AURORA TOWER ★ 120.35 (CTAF) 0	GND CON 119.15	CLNC DEL 119.15	PORTLAND CLNC DEL 119.95 (When tower closed)
--------------------------	--	---	--------------------------	---------------------------	---



NW-1, 04 NOV 2021 to 02 DEC 2021

NW-1, 04 NOV 2021 to 02 DEC 2021

900	4000	BTG	GLARA	LUTZZ INT I-UAO [8.1]	ELEV 200	TDZE 200
↑	hdg 050°	R-160	△	Remain within 10 NM	172° 7.1 NM from FAF	
				352°		
				172°		
				2600		
				3100		
				1000		
				0.9		
				1.7		
				4.5 NM		
CATEGORY	A	B	C	D		
S-17	1000-3/4 800 (800-3/4)	1000-1 800 (800-1)	1000-2	800 (800-2)		
C CIRCLING	1000-1 800 (800-1)	1000-1 1/4 800 (800-1 1/4)	1000-2 1/2	800 (800-2 1/2)		
FIDOV FIX MINIMUMS						
S-17	580-3/4	380 (400-3/4)	580-1	380 (400-1)		
C CIRCLING	700-1	500 (500-1)	700-1 1/2 500 (500-1 1/2)	940-2 1/4 740 (800-2 1/4)		
					Knots	60 90 120 150 180
					Min:Sec	7:06 4:44 3:33 2:50 2:22

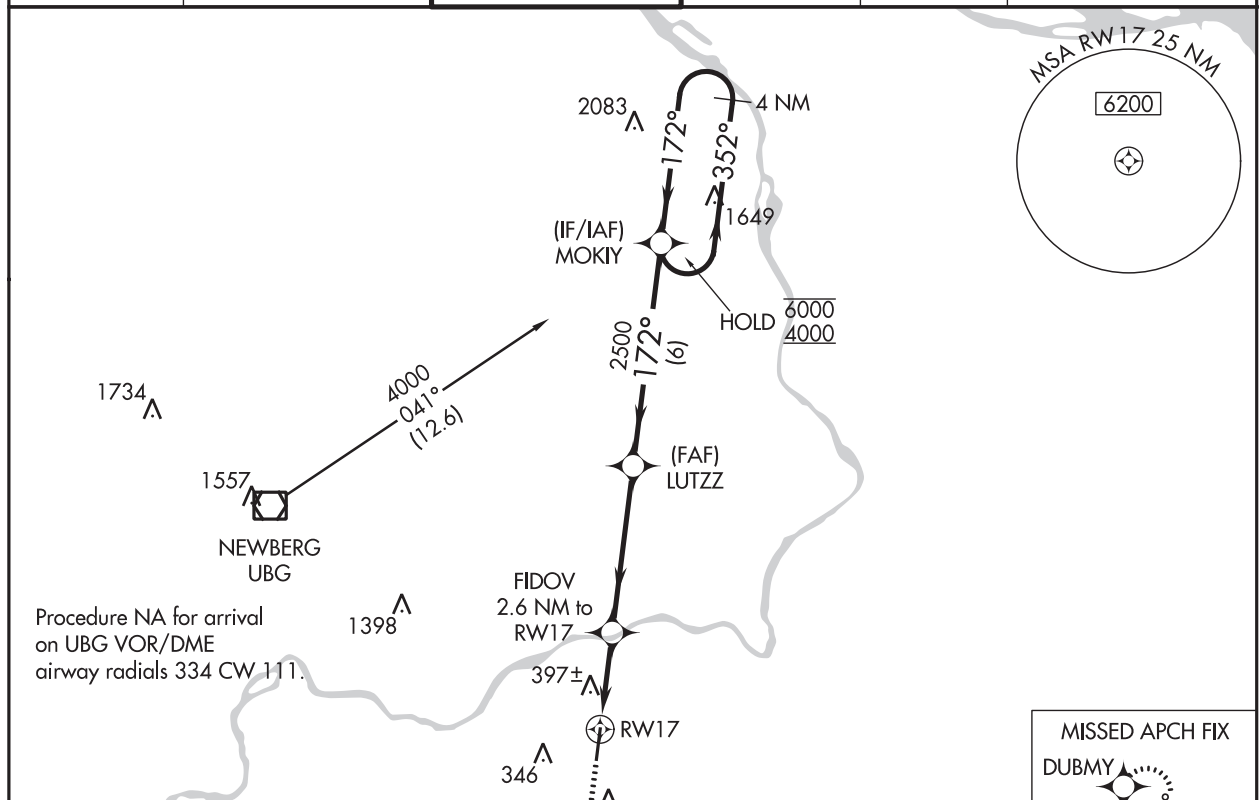
WAAS CH 70308 W17A	APP CRS 172°	Rwy Idg 5003 TDZE 200 Apt Elev 200
--	------------------------	---

RNAV (GPS) RWY 17

AURORA STATE (UAO)

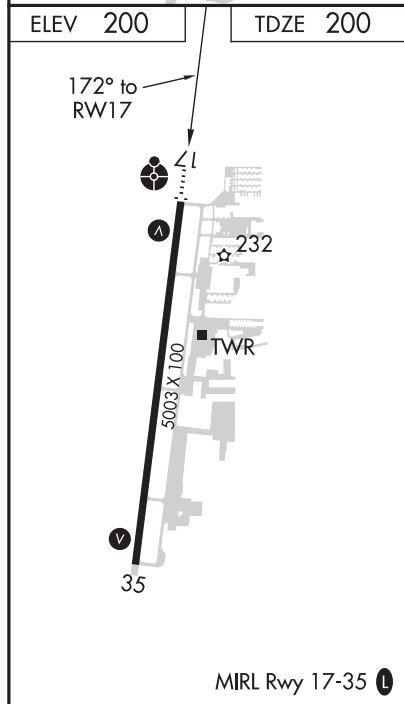
RNP APCH.	ODALS	MISSED APPROACH: Climb to 3900 direct DUBMY and hold, continue climb-in-hold to 3900.
<p>▼ Rwy 17 helicopter visibility reduction below 3/4 SM NA. For uncompensated Baro-VNAV systems, LNAV/VNAV NA below -6°C or above 54°C.</p> <p>▲ For inop ALS, increase LNAV/VNAV Cat A/B and LNAV Cat C/D visibility to 1 3/8 SM. Inop table does not apply to LPV and LNAV Cat A/B.</p>		

ATIS ★ 118.525	PORTLAND APP CON 126.0 269.175	AURORA TOWER ★ 120.35 (CTAF) 0	GND CON 119.15	CLNC DEL 119.15	PORTLAND CLNC DEL 119.95 (When tower closed)
--------------------------	--	---	--------------------------	---------------------------	---



NW-1, 04 NOV 2021 to 02 DEC 2021

NW-1, 04 NOV 2021 to 02 DEC 2021



ELEV 200	TDZE 200	<p>3900 DUBMY VGSI and RNAV glidepath not coincident (VGSI Angle 3.50/TCH 38).</p> <p>MOKIY 4 NM Holding Pattern</p> <p>FIDOV 2.6 NM to RW17</p> <p>LUTZZ 2500</p> <p>* LNAV only * 1.1 NM to RW17</p> <p>RW17 1060*</p> <p>GP 3.00° TCH 40</p>			
		1.1	1.5 NM	4.5 NM	6 NM
CATEGORY		A	B	C	D
LPV DA			511-7/8	311 (400-7/8)	
LNAV/VNAV DA			661-1 1/4	461 (500-1 1/4)	
LNAV MDA		660-1	460 (500-1)	660-1 1/8	460 (500-1 1/8)
CIRCLING		700-1	500 (500-1)	700-1 1/2	940-2 1/4
				500 (500-1 1/2)	740 (800-2 1/4)

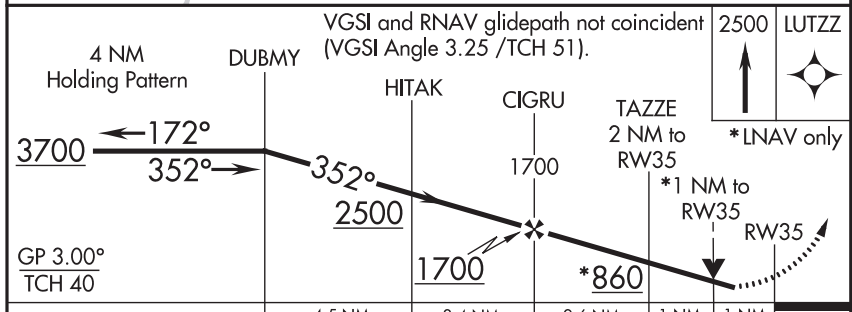
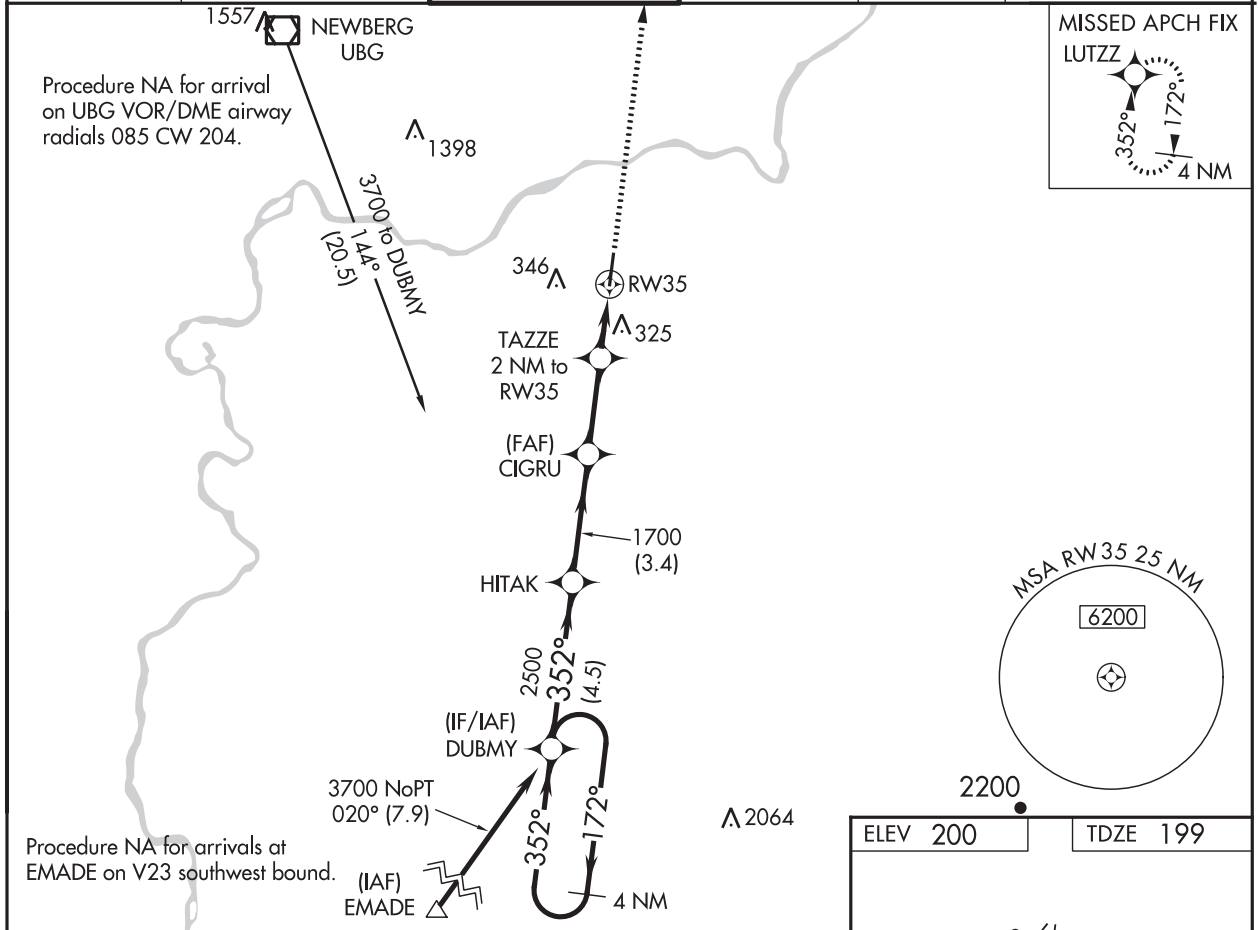
WAAS CH 77508 W35A	APP CRS 352°	Rwy Idg 5003 TDZE 199 Apt Elev 200
--	------------------------	---

RNAV (GPS) RWY 35

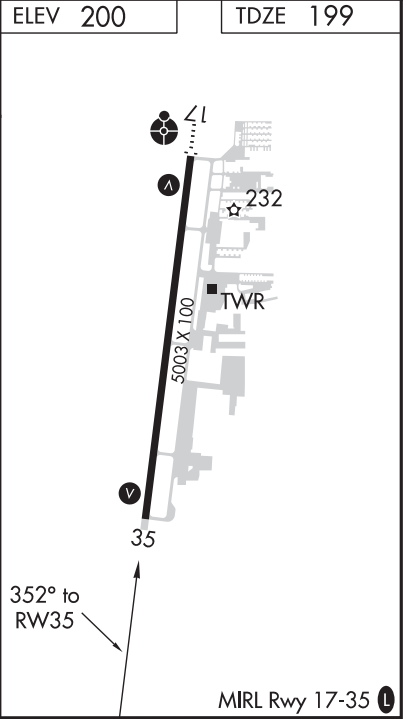
AURORA STATE (UAO)

RNP APCH.		MISSED APPROACH: Climb to 2500 direct LUTZZ and hold.	
<p>▽ For uncompensated Baro-VNAV systems, LNAV/VNAV NA below -6°C or above 54°C. Rwy 35 helicopter visibility reduction below 3/4 SM NA.</p>			

ATIS ★ 118.525	PORTLAND APP CON 126.0 269.175	AURORA TOWER ★ 120.35 (CTAF) 0	GND CON 119.15	CLNC DEL 119.15	PORTLAND CLNC DEL 119.95 (When tower closed)
--------------------------	--	---	--------------------------	---------------------------	---



CATEGORY	A	B	C	D
LPV DA	453-7/8 254 (300-7/8)			
LNAV/VNAV DA	515-1 316 (400-1)			
LNAV MDA	620-1 421 (500-1)	620-1 1/4 421 (500-1 1/4)		
C CIRCLING	700-1 500 (500-1)	700-1 1/2 500 (500-1 1/2)	940-2 1/4 740 (800-2 1/4)	

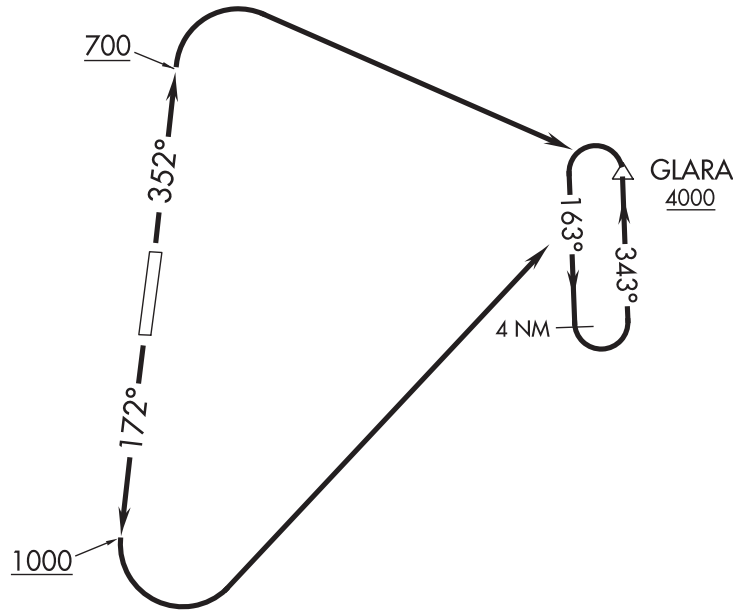


NW-1, 04 NOV 2021 to 02 DEC 2021

NW-1, 04 NOV 2021 to 02 DEC 2021

ATIS ★
118.525
CLNC DEL
119.15
PORTLAND CLNC DEL
119.95 (when tower closed)
GND CON
119.15
AURORA TOWER ★
120.35
PORTLAND DEP CON
126.0 284.6

**TOP ALTITUDE:
ASSIGNED BY ATC**



NOTE: RNAV 1.
NOTE: GPS required.

TAKEOFF MINIMUMS

Rwy 17: Standard with minimum climb of 375' per NM to 1000.
Rwy 35: Standard with minimum climb of 350' per NM to 700.

NOTE: Chart not to scale.

NW-1, 04 NOV 2021 to 02 DEC 2021

NW-1, 04 NOV 2021 to 02 DEC 2021



DEPARTURE ROUTE DESCRIPTION

TAKEOFF RUNWAY 17: Climb heading 172° to 1000, then climbing left turn direct GLARA. Thence

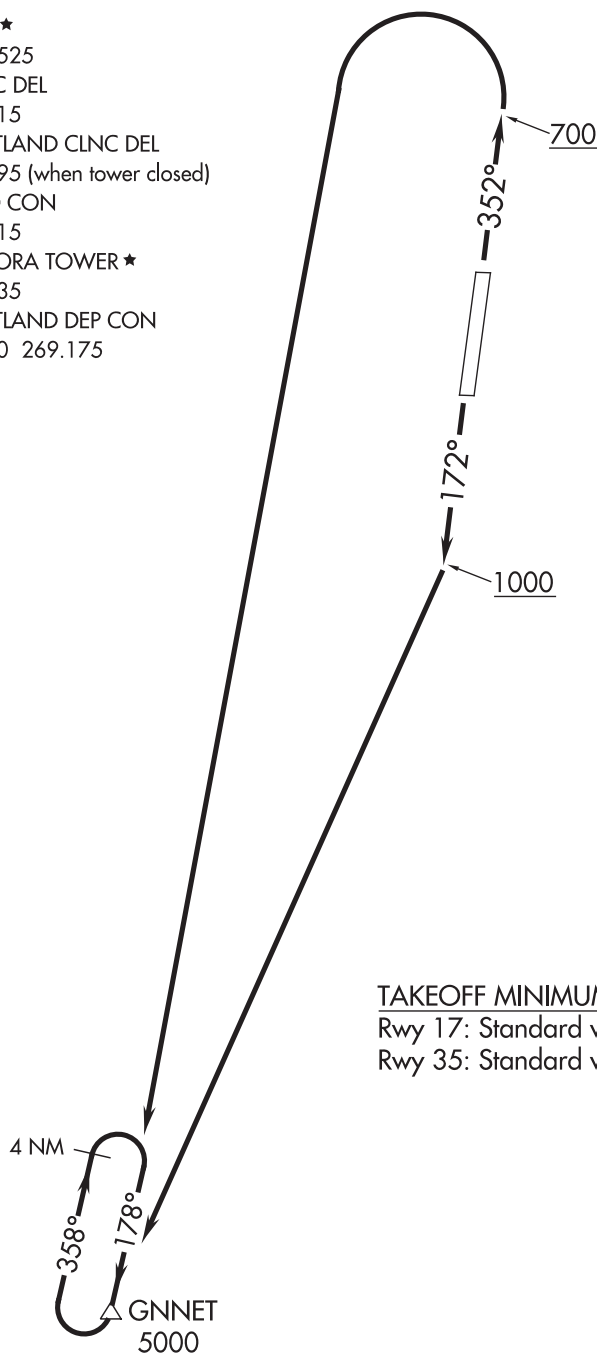
TAKEOFF RUNWAY 35: Climb heading 352° to 700, then climbing right turn direct GLARA. Thence

. . . . continue climb in GLARA holding pattern to cross GLARA at or above 4000 before proceeding on course.

ATIS ★
 118.525
 CLNC DEL
 119.15
 PORTLAND CLNC DEL
 119.95 (when tower closed)
 GND CON
 119.15
 AURORA TOWER ★
 120.35
 PORTLAND DEP CON
 126.0 269.175

**TOP ALTITUDE:
ASSIGNED BY ATC**

NOTE: RNAV 1
 NOTE: GPS required.



TAKEOFF MINIMUMS

Rwy 17: Standard with minimum climb of 375' per NM to 1000.
 Rwy 35: Standard with minimum climb of 350' per NM to 2100.

NOTE: Chart not to scale.

NW-1, 04 NOV 2021 to 02 DEC 2021

NW-1, 04 NOV 2021 to 02 DEC 2021



DEPARTURE ROUTE DESCRIPTION

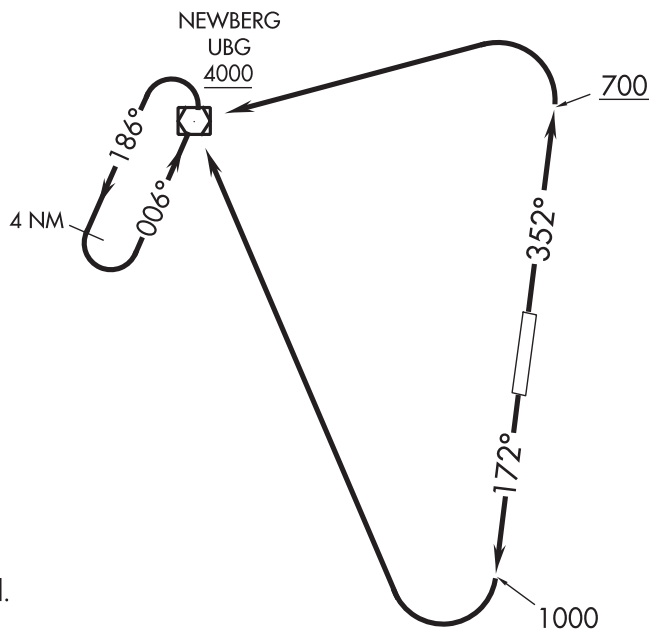
TAKEOFF RUNWAY 17: Climb heading 172° to 1000, then climbing right turn direct GNNET.
Thence

TAKEOFF RUNWAY 35: Climb heading 352° to 700, then climbing left turn direct GNNET.
Thence

. . . . continue climb in GNNET holding pattern to cross GNNET at or above 5000 before proceeding on course.

ATIS ★
118.525
CLNC DEL
119.15
PORTLAND CLNC DEL
119.95 (when tower closed)
GND CON
119.15
AURORA TOWER ★
120.35
PORTLAND DEP CON
126.0 269.175

**TOP ALTITUDE:
ASSIGNED BY ATC**



NOTE: RNAV 1.
NOTE: GPS required.

TAKEOFF MINIMUMS

Rwy 17: Standard with minimum climb of
375' per NM to 2100.
Rwy 35: Standard with minimum climb of
350' per NM to 2100.

NOTE: Chart not to scale.



DEPARTURE ROUTE DESCRIPTION

TAKEOFF RUNWAY 17: Climb heading 172° to 1000, then climbing right turn direct UBG VOR/DME. Thence

TAKEOFF RUNWAY 35: Climb heading 352° to 700, then climbing left turn direct UBG VOR/DME. Thence

. . . . continue climb in hold UBG VOR/DME holding pattern to cross UBG VOR/DME at or above 4000 before proceeding on course.

NW-1, 04 NOV 2021 to 02 DEC 2021

NW-1, 04 NOV 2021 to 02 DEC 2021