

# ALLEN CREEK ROAD IMPROVEMENTS PROJECT



## JULY 2023 ONLINE OPEN HOUSE SUMMARY

Prepared by JLA Public Involvement  
August 15, 2023

### Overview

The project hosted an online open house and interactive map that was accessible at [www.allencreekroad.org](http://www.allencreekroad.org) from July 18 to August 4, 2023. The purpose of the site was to:

- Share the latest Allen Creek Road design with residents and the surrounding community.
- Answer questions about the design and address any remaining concerns as possible.

### Format

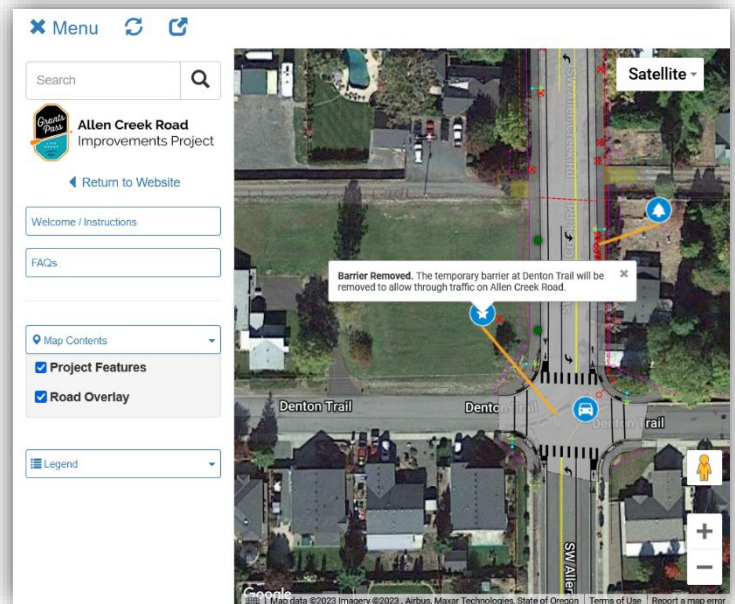
The online open house welcome screen provided a project status update and instructions for how to interact with an aerial simulation of the latest project design. Users could show or hide map features to see how the project will impact specific properties or click on icons to read about project features. A Frequently Asked Questions page responded to common questions and concerns and was updated in response to comments received during the online event. An online form was available for 18 days and allowed participants to comment or ask questions about the design.

### Participation

- 117 unique users (IP addresses) visited the map page between 7/18 and 8/4, with 103 visits on 7/19.
- Eight visitors submitted comments.

### Outreach/Promotion

- Postcard sent to approximately 700 addresses in the project area between New Hope and US 199, the interested parties list, Allen Creek Road properties and property owners.
- Fact sheet/newsletter sent to Allen Creek property owners.
- Notification posted on the project website.
- Email to Allen Creek Road Improvement Project stakeholders.
- Facebook, Nextdoor, and Instagram social media post(s) by Grants Pass.



Interactive map screenshot.

## Feedback Summary

- **West Harbeck and Allen Creek.** Most commenters raised safety concerns about the design of the intersection of Harbeck and Allen Creek, which showed the existing three-way stop in the latest project design. Commenters felt strongly that a four-way stop would improve safety by forcing through-traffic to slow down.
- **General safety.** Residents expressed general concerns about safety due to increased traffic and the potential for higher speeds on Allen Creek Road. Commenters were skeptical that pedestrian islands, street trees and the slight roadway curve would be as effective at reducing speed as adding new stop signs, speed humps, or reducing the speed limit.
- **New Hope Road.** One commenter expressed concern about traffic backing up on Allen Creek Road while waiting to turn onto New Hope Road since this could block access to adjacent streets. “Do not block” warnings were suggested as a possible way to mitigate this impact.
- **Stormwater.** There was one question about the potential for increased stormwater impacts related to a specific property.

## Response to Questions

Respondents who submitted a form were able to request a response from the project team. Where email addresses were provided, the City of Grants Pass offered the following response to questions about the intersection of Allen Creek Road and West Harbeck:

*Thanks for your feedback on the Allen Creek Road design. We received several questions and concerns about general safety and the intersection at West Harbeck we wanted to circle back to see if we could respond to your concerns.*

*It is true that traffic on Allen Creek Road will increase after removing the barriers at Denton Trail. To encourage drivers to slow down, the new project design already includes a slight curve and traffic calming medians. In addition, although the project plans only show the existing 3-way stop at West Harbeck, the City does intend to change this intersection to a 4-way stop. This change should help improve safety and reduce confusion for drivers. The new stop sign may not be installed as part of this project but should be added before the barriers at Denton Trail are removed.*

*The yield sign at Allen Creek Road and West Harbeck will remain in place since this project is not expected to increase the number of cars making right turns at this location.*

The City of Grants Pass provided individual phone-responses to respond to other concerns.

## Comments

*These verbatim comments were submitted via the online open house form between 7/18 and 8/4. They have not been edited for grammar or spelling, though personally identifiable information has been removed.*

1. I can't tell from your map whether or not you have stop signs at each end of the road improvement.

You mention new trees being planted and a slight curve to the road, but as it is before the improvements, we have trees that are actually growing over the road and still people go well over the posted limit. If you are truly concerned about the safety of people, stop signs or speed humps really need to be put in place.

2. I live on SW Garden meadow Drive, which is located very close to the Allen Creek & New Hope Road intersection. My wife and I are concerned about the volume of traffic that could back up on Allen Creek with or without a traffic light, making entering or exiting our cul-de-sac difficult. We hope at a minimum the city will paint on the street, "Do Not Block", as it is currently on Harbeck Road near the First Community Bank.
3. What are they going to do about the excessive water runoff that will be going right down the center of my pasture, since I'm at the lowest point of the road?
4. I would like to request a stop sign be put in place of the yield sign at Harbeck and Allen Creek. Our driveway is [LOCATION REMOVED]. It is a daily danger to me and my family when we are leaving our house. People do not yield if they don't see anyone to the left. People do not realize or think about what is around the corner as they fly through it.
5. I thought a roundabout was being installed at W. Harbeck and Allen Creek. I'd fully support this.

If there isn't going to be a roundabout, I request that become a four way stop. People already drive 45mph down Allen Creek. There needs to be something that addresses the speeders.

Thank you for listening.

6. Absolutely! Allen Creek and West Harbeck demands a four way stop. You're planning islands along the route south of the intersection for "Pedestrian Safety" and yet you will allow vehicles to pass through this intersection without any realistic speed control. Vehicles traveling south, to points beyond, will continue to pick up speed once they pass the signal at Albertsons. The speed limit is 35 MPH in an area that is residential, with existing, as well as, planned High Density residential population. You can say "That's an ENFORCEMENT issue" which is just a crock, to pass the buck for poor planning. A four way stop will slow all vehicles and improve safe traffic flow across Allen Creek. Also the entire route should be 25 MPH!

Once this project is complete you will witness a decreased flow on West Harbeck between Allen Creek and Williams Hwy because vehicles will travel straight through to and from New Hope Rd.

My credentials, regarding this assessment, I was trained by ODOT to assess traffic flows, safety issues and conflict points on Highway improvement developments.

I know why this intersection is a 3 way stop. It was part of the design to move traffic off of Hwy 199 in

the fairgrounds area to relieve the congestion caused by people wanting to access Williams Hwy and the New Hope areas. This provided the justification for improving West Harbeck to accommodate the anticipated additional traffic flows.

7. I live off of West Harbeck, West of Allen Creek. Right now the Allen Creek / W. Harbeck intersection has a three-way stop. Why on earth would you not institute a four-way stop there when completed? If you want to create a speedway South on Allen Creek from Albertsons then by all means don't add a stop sign at W. Harbeck.
8. Why in the hell are you not making the intersection of Allen Creek and West Harbeck a four way stop. A few years back when they first talked about opening Allen Creek, we were told it would be a four way stop. Now you guys are trying to sneak this by us. Someone will get killed by this stupid decision. Residents who reside west of Allen Creek off of West Harbeck and the side streets already have a difficult time turning onto Allen Creek from both West Harbeck and Schutzwahl.